

YEAR

2013

LINK

LUNG WO RD (from MAN YIU ST to LUNG WUI RD)

COVERAGE (B) STATION

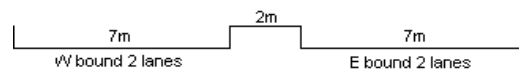
2217

ROAD NETWORK

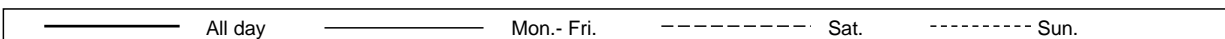
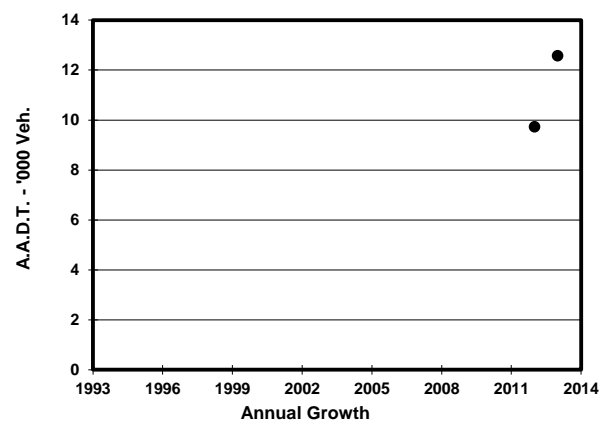
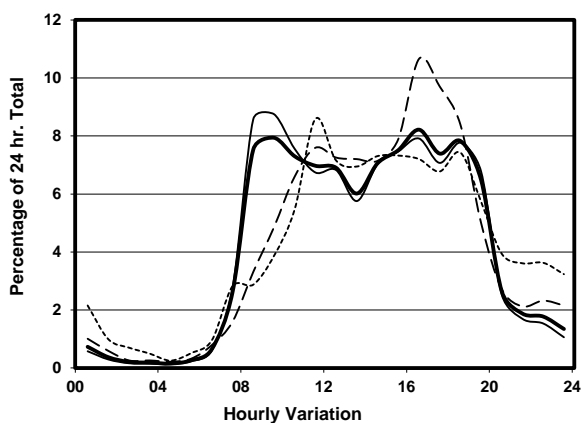
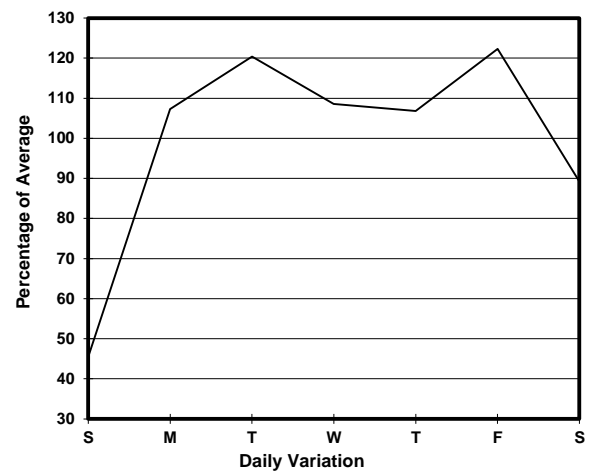
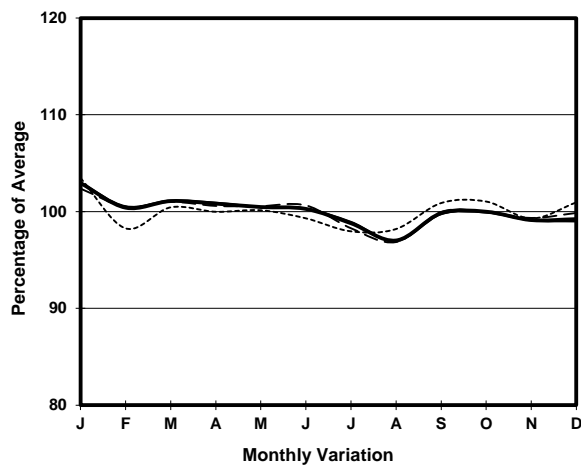
MAJOR

ROAD TYPE

PRIMARY DISTRIBUTOR



## 1. TRAFFIC FLOW VARIATION AND GROWTH



## 2. TRAFFIC CHARACTERISTICS (BY DIRECTION)

Parameter	All - Day	Mon. - Fri.	Sat.	Sun.
<b>EAST BOUND</b>				
A.A.D.T.	10570	12240	10060	5080
R 12 / 24 - %	83.1	84	82.4	73.8
R 16 / 24 - %	96	96.8	94.4	90.6
AM Peak Hour	0900-1000	0900-1000	0900-1000	0900-1000
One-way flow at AM peak hour	830	1060	490	210
T - % (AM)	-	10.3	-	-
PM Peak Hour	1600-1700	1600-1700	1600-1700	1800-1900
One-way flow at PM peak hour	890	990	1090	380
T - % (PM)	-	4.3	-	-
Prop.of commercial vehicles - 16 hr.	-	7.8	-	-
<b>WEST BOUND</b>				
A.A.D.T.	2000	2420	1500	810
R 12 / 24 - %	84.4	85.5	81.1	73.4
R 16 / 24 - %	96.4	96.8	94.5	91.3
AM Peak Hour	0900-1000	0900-1000	0900-1000	0700-0800
One-way flow at AM peak hour	170	220	70	30
T - % (AM)	-	11.3	-	-
PM Peak Hour	1600-1700	1600-1700	1600-1700	1800-1900
One-way flow at PM peak hour	140	170	140	60
T - % (PM)	-	-	-	-
Prop.of commercial vehicles - 16 hr.	-	6.7	-	-

## 3. OTHER INFORMATION AND COMMENT

**4. Vehicle classification and occupancy - Monday to Friday**

Time		Class of vehicle									
		Motor Cycle	Private Car	Taxi	Private LB	PLB	Goods veh.		Non Fr. Bus	Fr. Bus	
							Light	M & H		SD	DD
0700-0800	Pro	0.0	13.8	63.1	0.0	0.0	15.4	3.1	3.1	0.0	1.5
	Ocp	0.0	1.3	2.3	0.0	0.0	1.3	1.0	13.0	0.0	1.0
0800-0900	Pro	1.7	39.2	41.0	0.7	0.0	7.9	0.7	5.5	0.0	3.3
	Ocp	1.0	1.4	2.0	11.5	0.0	1.2	1.0	1.3	0.0	1.0
0900-1000 Peak hour	Pro	1.8	45.3	33.6	1.1	0.0	7.8	0.7	5.3	0.1	4.3
	Ocp	1.0	1.3	1.9	1.0	0.0	1.6	1.5	4.2	1.0	1.0
1000-1100	Pro	0.9	29.8	48.0	1.4	0.0	12.6	1.9	2.8	0.1	2.4
	Ocp	1.0	1.3	2.0	1.3	0.0	1.6	1.3	5.7	1.0	1.0
1100-1200	Pro	1.5	39.1	32.1	2.5	0.0	16.1	1.5	6.5	0.0	0.6
	Ocp	1.0	1.6	1.8	2.2	0.0	1.4	2.3	8.5	0.0	1.0
1200-1300	Pro	3.0	38.7	42.6	0.5	0.0	10.9	0.5	3.5	0.0	0.4
	Ocp	1.0	1.4	2.2	4.0	0.0	1.6	3.0	4.4	0.0	1.0
1300-1400	Pro	2.2	35.3	43.5	0.5	0.0	9.8	4.9	3.8	0.0	0.0
	Ocp	1.0	1.4	2.5	9.0	0.0	1.4	1.1	9.0	0.0	0.0
1400-1500	Pro	2.4	33.1	38.9	1.0	0.0	17.8	1.4	4.8	0.0	0.6
	Ocp	1.0	1.6	2.1	1.5	0.0	1.4	1.3	2.6	0.0	1.0
1500-1600	Pro	1.6	37.5	34.3	2.1	0.0	16.4	3.2	4.2	0.1	0.5
	Ocp	1.0	1.5	2.1	5.5	0.0	1.5	1.0	5.8	1.0	1.0
1600-1700	Pro	3.1	29.9	39.2	3.6	0.0	20.5	0.0	2.2	0.1	1.3
	Ocp	1.3	1.6	2.1	2.6	0.0	1.6	0.0	1.6	1.0	1.0
1700-1800	Pro	2.3	48.3	29.2	1.4	0.0	13.0	0.9	3.2	0.0	1.6
	Ocp	1.0	1.4	2.4	4.3	0.0	1.6	1.0	4.9	0.0	1.0
1800-1900	Pro	2.7	44.3	40.2	1.0	0.0	4.1	0.3	6.5	0.0	0.9
	Ocp	1.0	1.7	2.3	1.7	0.0	2.0	1.0	5.2	0.0	1.0
1900-2000	Pro	0.8	53.0	36.6	0.0	0.0	2.9	0.0	6.2	0.0	0.6
	Ocp	2.0	1.6	2.4	0.0	0.0	1.4	0.0	1.7	0.0	1.0
2000-2100	Pro	0.0	49.4	39.5	0.0	0.0	1.6	0.0	6.6	0.0	2.9
	Ocp	0.0	1.8	2.5	0.0	0.0	1.0	0.0	3.0	0.0	1.0
2100-2200	Pro	1.7	43.9	45.6	0.0	0.0	3.4	0.0	5.1	0.0	0.4
	Ocp	1.0	1.5	2.0	0.0	0.0	2.0	0.0	2.0	0.0	1.0
2200-2300	Pro	3.8	42.1	42.1	0.0	0.0	0.0	1.9	9.6	0.0	0.5
	Ocp	1.5	2.1	2.0	0.0	0.0	0.0	1.0	1.0	0.0	1.0
16 hours	Pro	1.9	39.7	39.0	1.2	0.0	10.7	1.2	4.8	0.1	1.5
	Ocp	1.1	1.5	2.2	3.4	0.0	1.5	1.3	4.3	1.0	1.0

**Legend**

**Pro.** Proportion of vehicles in % (Sum may not add up to 100% due to figure rounding)  
**Ocp.** Average occupancy of vehicles  
**M&H** Medium and Heavy